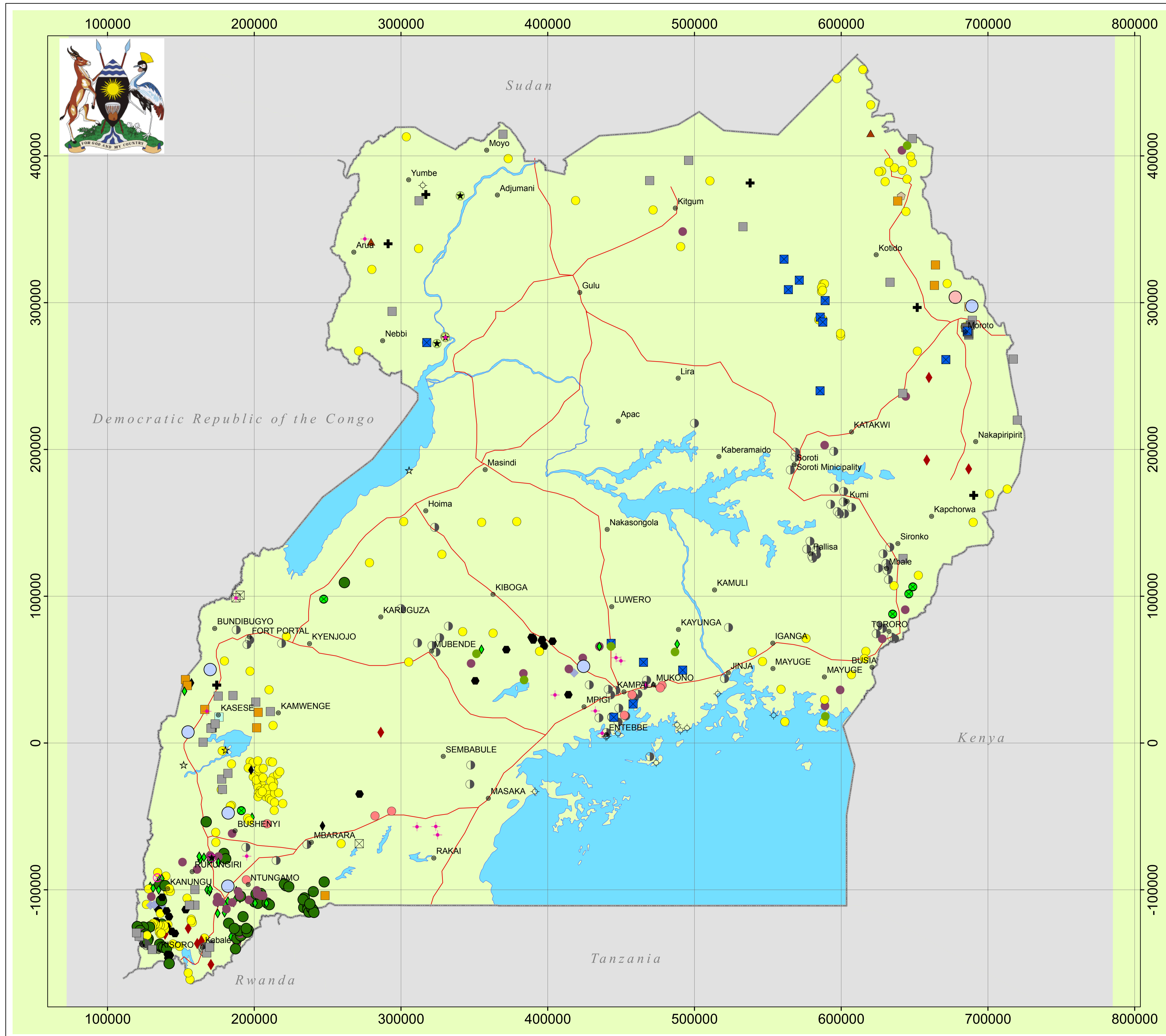
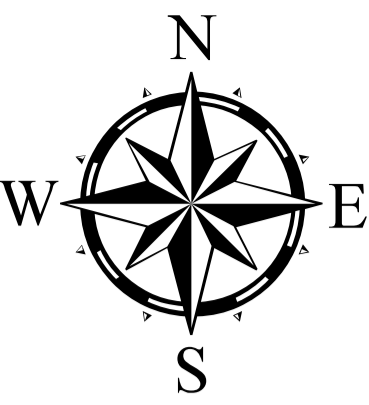


MINERAL OCCURENCES OF UGANDA

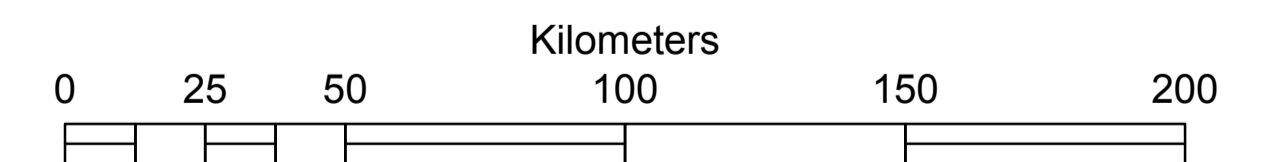


Legend

- | Industrial Minerals | Metallic Minerals |
|-----------------------|-----------------------|
| ▲ Asbestos | ◆ Beryl |
| ● Clay | ◆ Bismuth |
| ★ Diatomite | ■ Chromium |
| ⊗ Feldspar | □ Cobalt |
| ● Granite gneiss | ● Columbite-Tantalite |
| ⊕ Graphite | ■ Copper |
| ⊠ Gypsum | ● Gold |
| ⊕ Kaolin | ◆ Iron Ore |
| ★ Kyanite | ◆ Lead |
| ■ Limestone | ● Magnesite |
| ■ Marble | ● Tin (Cassiterite) |
| ■ Mica | ● Wolfram (Tungsten) |
| ● Phosphates | ◆ Zinc |
| ☆ Rock Salt | ● Lithium |
| ◇ Silica sand | |
| ● Talc | |
| ■ Vermiculite | |
| ● Rare Earth Elements | |

Other features and structures

- Towns
- Lakes
- Roads
- National boundary



Contact:
 Ministry of Energy & Mineral Development,
 Director, Directorate of Geological Surveys & Mines
 Plot 21-29, Johnstone Street,
 P.O.Box 9, Entebbe, Uganda.

Updated as of 11-01-2017

